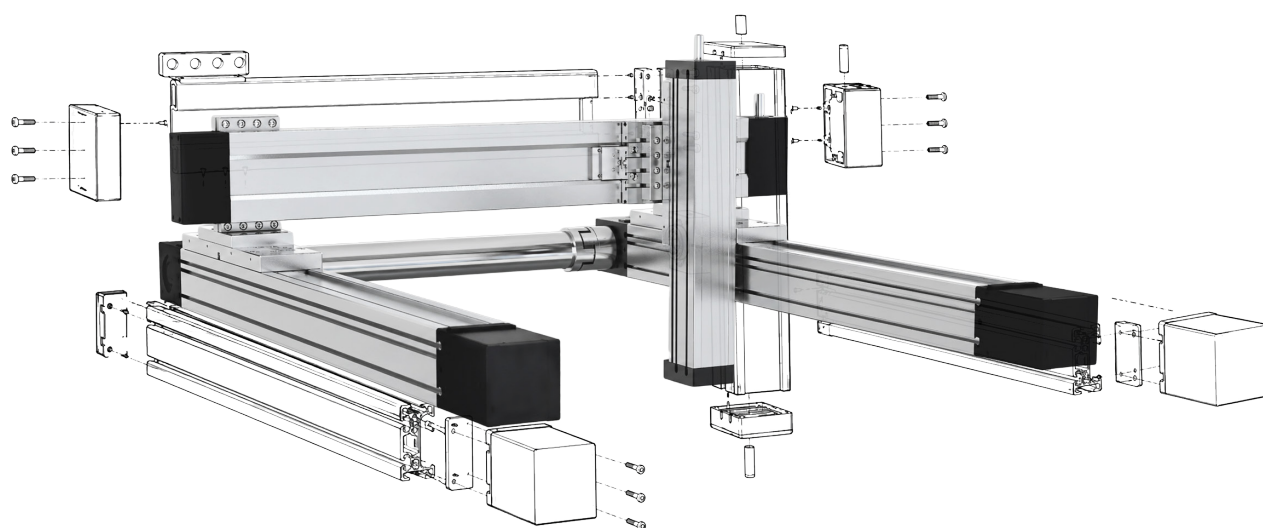




INSPIRING PEOPLE
GREAT SOLUTIONS

INDUSTRIAL ACTUATORS OVERVIEW

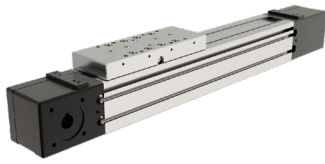
ELECTRIC CYLINDERS
LINEAR ACTUATORS



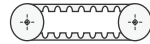
Discover | [weiss-world.com](https://www.weiss-world.com)

BELT-DRIVEN LINEAR ACTUATORS

BR-S/BT-S



DRIVE



GUIDE



BR-S



BT-S

FEATURES

- High Speed
- High Acceleration
- Large Stroke Lengths
- Good Repeatability

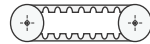
WEISS BR-S and BT-S linear actuators with a toothed belt drive and compact dimensions provide performance characteristics such as high speed, accuracy, and repeatability. They can easily be combined with multi-axis systems and offer an excellent price/performance ratio with quick delivery times.

The compact, precision-extruded aluminum profile from 6063 aluminum with an integrated zero-backlash ball rail guide system allows high load capacities and optimized cycle times for the movement of larger masses at high speed. For very high speeds, up to 10 m/s, the track rollers (journal bearings) of the BT-S are particularly suitable.

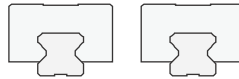
BR-D



DRIVE



GUIDE



FEATURES

- High Speed
- High Acceleration
- Large Stroke Lengths
- Good Repeatability
- High Load Capabilities
- High Flexural Rigidity

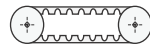
The WEISS BR-D series features linear actuators with a toothed belt drive and two parallel, integrated, zero-backlash ball rail guides. The compact design supports performance characteristics such as high speed and repeatability. The actuators can easily be combined into multi-axis systems. The BR-D series offers an excellent price/performance ratio with quick delivery times.

Different carriage lengths with lubrication ports allow for easy re-lubrication of the ball rail guide system and allow additional accessories to be attached. The re-lubrication can also be performed through maintenance holes on the side of the profile.

BR-E



DRIVE



GUIDE



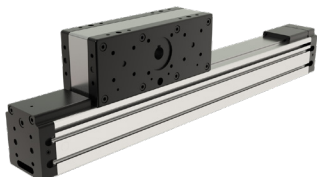
FEATURES

- Excellent Price/Performance Ratio
- High Acceleration
- Large Stroke Lengths

The WEISS BR-E series of linear actuators is a powerful and cost-effective solution with a toothed belt drive and a zero-backlash ball rail guide system for easy and accurate linear motion. The BR-E series can also be easily combined to create multi-axis systems and offers an excellent price/performance ratio and quick delivery times.

The aluminum profile includes T-slots for mounting the linear actuator and for attaching sensors and switches. Different carriage lengths allow additional accessories to be attached to the side.

BR-Z



DRIVE



GUIDE



FEATURES

- High Speed
- High Acceleration
- Large Stroke Lengths
- Good Repeatability

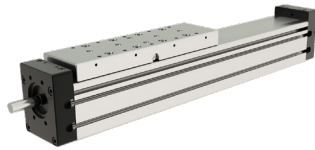
The WEISS BR-Z series includes Z-axis linear actuators with a toothed belt drive, an integrated ball rail guide system, and compact dimensions. This series of linear actuators provides performance characteristics such as high speed, accuracy, and repeatability in vertical applications. The actuators can easily be combined with multi-axis systems.

The aluminum profile includes T-slots for attaching sensors and switches. A reed switch can also be used. The drive block allows attachment of a motor, gearbox housing, and additional accessories. The central lubrication port on the drive block allows easy re-lubrication of the ball rail guide.

All linear actuators can be combined to develop multi-axis solutions. Standard and custom brackets, clamping fixtures, adapter plates, and other accessories are also available.

BALL SCREW-DRIVEN LINEAR ACTUATORS

SR-S



DRIVE



GUIDE



FEATURES

- High Repeatability
- Ball Screw Support System
- Higher Speeds at the Same Stroke
- High Axial Load Capabilities
- Large Stroke Lengths

The WEISS SR-S series of linear actuators offers a precision ball screw drive, an integrated guide rail, and compact dimensions. These actuators come standard with a precision ball screw tolerance class of ISO7 (ISO5 available on request) and a ball nut with reduced backlash. The SR-S series provides performance characteristics such as high speeds, positioning accuracy, and repeatability. These actuators can easily be combined with multi-axis systems.

To achieve higher speeds for the same stroke length, the ball screw support system can be integrated. With this feature, vibrations and deflections of the ball screw are reduced, allowing for longer strokes. The system enables ball screw support in horizontal or vertical mounting orientations. A 2LR version of the SR-S linear actuator is also available, in which two carriages move simultaneously in opposite directions.

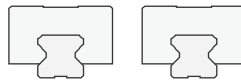
SR-D



DRIVE



GUIDE



FEATURES

- High Repeatability
- High Load Capabilities
- High Flexural Rigidity

The SR-D series of linear actuators features a precision ball screw drive and two parallel, integrated, zero-backlash ball rail guides. The compact design supports performance characteristics such as high speeds, accuracy, and repeatability. The actuators can easily be combined into multi-axis systems. Two parallel circulating antistatic polyurethane sealing strips and an aluminum cover protect all components inside the profile from dust and other contaminants.

Different carriage lengths with lubrication ports allow for easy re-lubrication of the ball screw and ball rail guide system and allow additional accessories to be attached. The re-lubrication can also be performed through maintenance holes on the side of the profile.

PC-S ELECTRIC CYLINDERS



The WEISS PC-S electric cylinders with a precision ball screw drive are based on the standard ISO 15552. Their external design and dimensions are very similar to those of pneumatic cylinders. Performance characteristics such as high speeds, positioning accuracy, and high repeatability are ensured through a precision ball screw with reduced backlash (preload on request) of the ball nut and non-rotating piston rod. For a long service life, re-lubrication can be performed through a lubrication nipple.

The design's smooth surfaces enable easy cleaning of the cylinder. In combination with a Class H1 lubricant, the cylinder is also suitable for food and beverage applications. It can also be equipped with switches and ISO standard accessories.

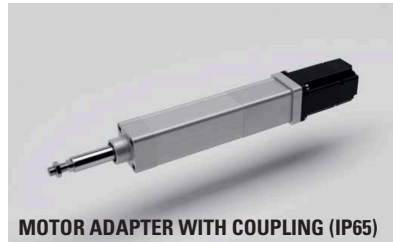
The excellent sealing of the components in the cylinder ensures an IP65 protection class and protects the interior of the cylinder from dust, water, and other contaminants. The IP65CR version also offers high corrosion resistance in harsh environments.



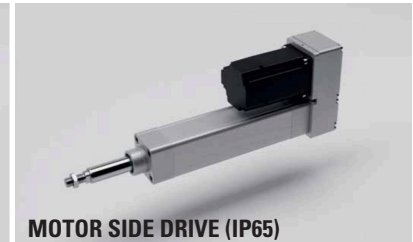
SENSOR HOLDER



ISO STANDARD ACCESSORIES



MOTOR ADAPTER WITH COUPLING (IP65)



MOTOR SIDE DRIVE (IP65)



IP65 PROTECTION CLASS
(IP65)



IP65 PROTECTION CLASS WITH
HIGH CORROSION RESISTANCE
(IP65CR)



FOR APPLICATIONS IN THE
FOOD INDUSTRY
(FI)



INSPIRING AUTOMATION



Scan the QR code to select and configure your actuator online at [OneWEISS.com](https://www.OneWEISS.com).

WEISS North America, Inc.

3860 Ben Hur Avenue

Willoughby, Ohio 44094

Phone: 440-269-8031 | Toll-Free: 888-934-7762 | Fax: 440-269-8036

[weiss-world.com](https://www.weiss-world.com) | info.us@weiss-world.com